

**JERDE**

**2151**

**PROFESSIONAL DR.**  
**Roseville, CA**

**OFFICE SPACE FOR LEASE**

SUITE 100: +/-2,761 SF

SUITE 104: +/-1,168 SF

SUITE 105: +/-2,052 SF    SUITE 200: +/-5,149 SF

**Josie Jerde**

**(916) 849-1514**

**[josie@jerdecre.com](mailto:josie@jerdecre.com)**

[www.JERDECRE.com](http://www.JERDECRE.com)

Lic#01344316

RE/MAX Commercial



# 2151

## PROFESSIONAL DR.

- FURNITURE AVAILABLE
- ABUNDANT AMENITIES NEARBY
- FIRST FLOOR SUITES
- EASY ACCESS TO INTERSTATE 80
- ABUNDANT PARKING
- OUTDOOR SEATING AREAS
- NICE GLASS LINES

# \$2.00 PSF

FULL SERVICE



## 2151 PROFESSIONAL DR.

**2151 Professional Drive** is a two story office building in **The Johnson Ranch office Development** located in **desirable Roseville, CA.** near the high traffic intersection of Douglas Blvd. and Eureka Rd. The building is a short drive to and from **Interstate 80** and offers an abundance of parking in front of the building as well as on the side providing easy access for employees and visitors. The property is of **brick construction** and features attractive landscaping. Professional finishes are found throughout the common area lobbies, hallways, and restrooms. Abundant amenities include a variety of dining and professional options for your day-to-day business needs. **Amenities include:** Pete's Restaurant, Brewhouse, Johnson Ranch Sports Club, Pieology Pizza, Starbucks, Macaroni Grill, Dos Coyotes, The Fountains Entertainment Center, and much more.





# PHOTOS Suite 100



**JERDE**

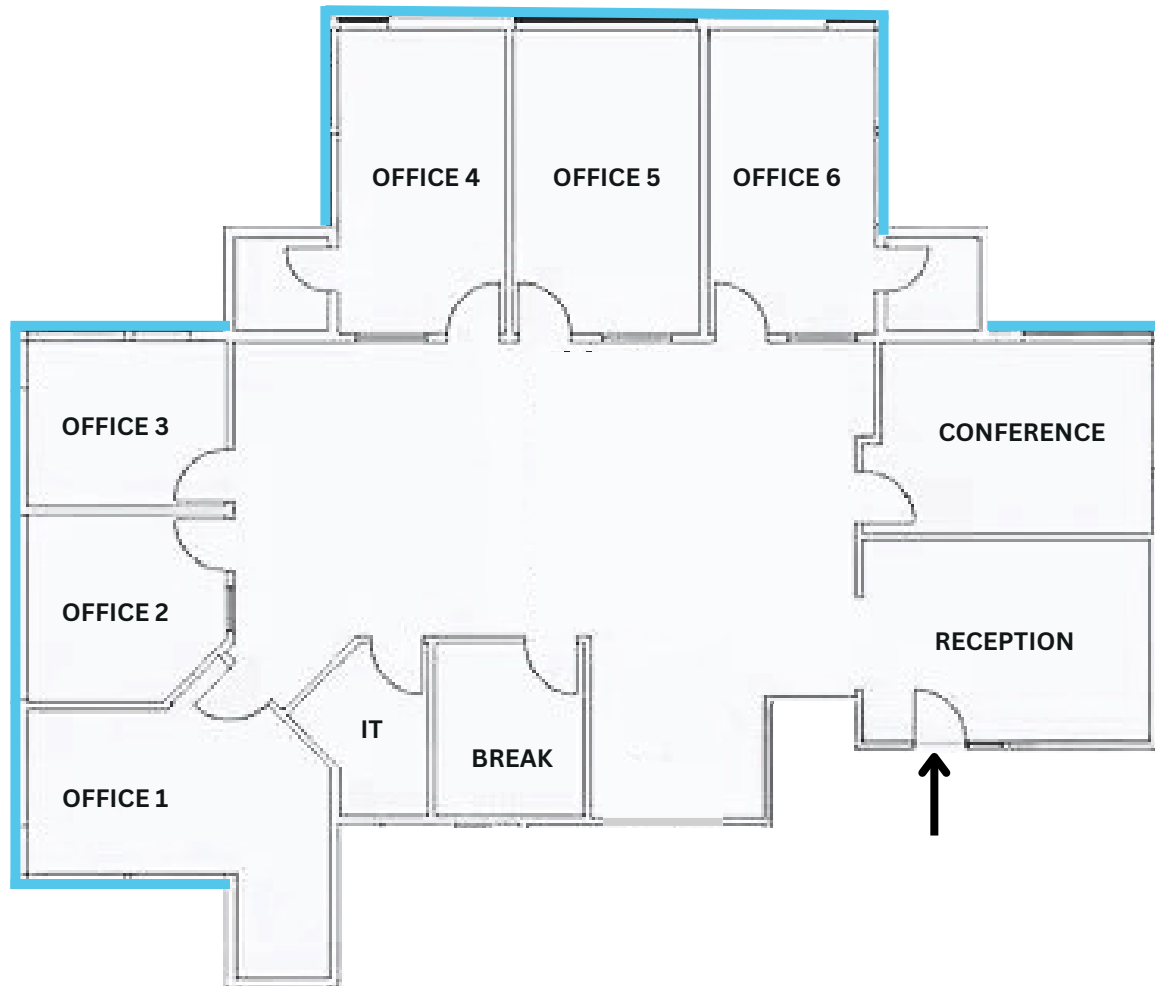
# 2151

PROFESSIONAL DR.

# FLOOR PLAN

## Suite 100

+/- 2,761 RSF



 GLASS LINE

# JERDE

The information contained in this communication is strictly confidential. This information has been obtained from sources believed to be reliable but has not been verified. NO WARRANTY OR REPRESENTATION, EXPRESS OR IMPLIED, IS MADE AS TO THE CONDITION OF THE PROPERTY (OR PROPERTIES) REFERENCED HEREIN OR AS TO THE ACCURACY OR COMPLETENESS OF THE INFORMATION CONTAINED HEREIN, AND SAME IS SUBMITTED SUBJECT TO ERRORS, OMISSIONS, CHANGE OF PRICE, RENTAL OR OTHER CONDITIONS, WITHDRAWAL WITHOUT NOTICE, AND TO ANY SPECIAL LISTING CONDITIONS IMPOSED BY THE PROPERTY OWNERS. ANY PROJECTIONS, OPINIONS OR ESTIMATES ARE SUBJECT TO UNCERTAINTY AND DO NOT SIGNIFY CURRENT OR FUTURE PROPERTY PERFORMANCE.

**Josie Jerde**

(916) 849-1514

josie@jerdecre.com



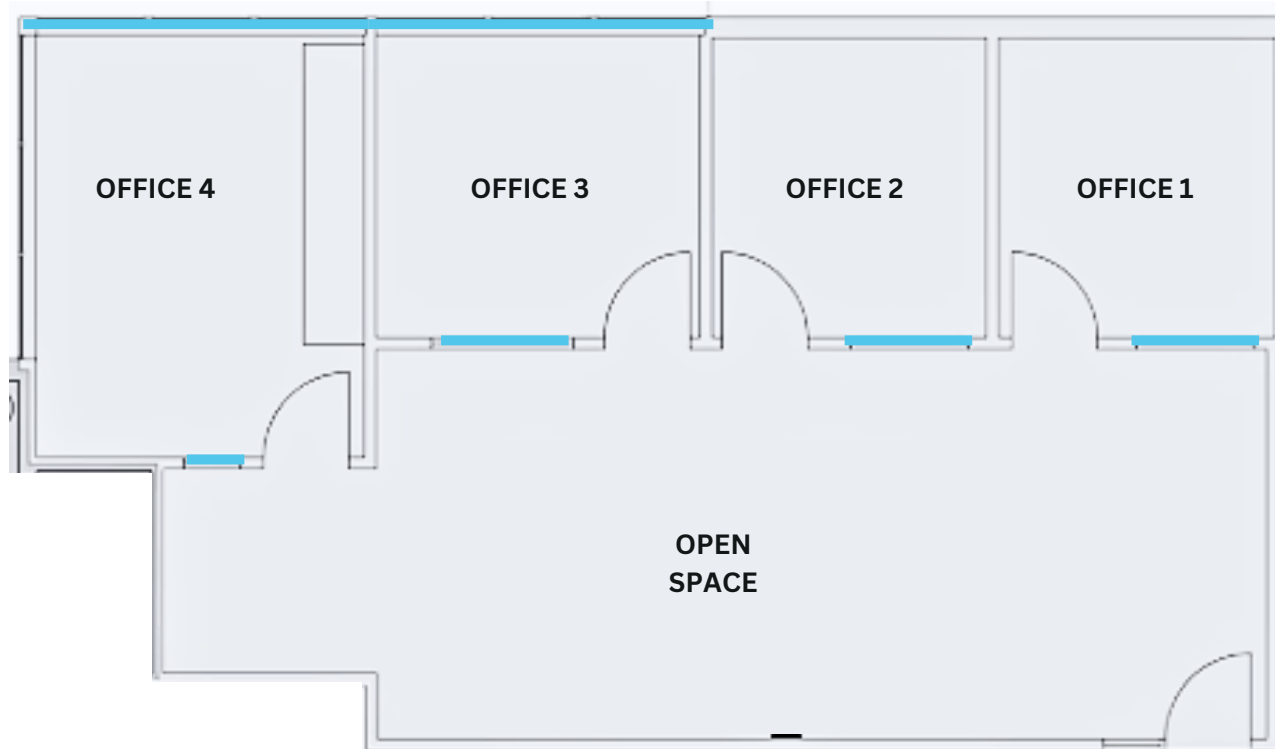
# 2151

PROFESSIONAL DR.

# FLOOR PLAN

## Suite 104

+/- 1,168 RSF



 GLASS LINE

# JERDE

The information contained in this communication is strictly confidential. This information has been obtained from sources believed to be reliable but has not been verified. NO WARRANTY OR REPRESENTATION, EXPRESS OR IMPLIED, IS MADE AS TO THE CONDITION OF THE PROPERTY (OR PROPERTIES) REFERENCED HEREIN OR AS TO THE ACCURACY OR COMPLETENESS OF THE INFORMATION CONTAINED HEREIN, AND SAME IS SUBMITTED SUBJECT TO ERRORS, OMISSIONS, CHANGE OF PRICE, RENTAL OR OTHER CONDITIONS, WITHDRAWAL WITHOUT NOTICE, AND TO ANY SPECIAL LISTING CONDITIONS IMPOSED BY THE PROPERTY OWNERS. ANY PROJECTIONS, OPINIONS OR ESTIMATES ARE SUBJECT TO UNCERTAINTY AND DO NOT SIGNIFY CURRENT OR FUTURE PROPERTY PERFORMANCE.

**Josie Jerde**

(916) 849-1514

josie@jerdecre.com



# 2151

PROFESSIONAL DR.

# FLOOR PLAN

## Suite 105

+/- 2,052 RSF



 GLASS LINE

# JERDE

The information contained in this communication is strictly confidential. This information has been obtained from sources believed to be reliable but has not been verified. NO WARRANTY OR REPRESENTATION, EXPRESS OR IMPLIED, IS MADE AS TO THE CONDITION OF THE PROPERTY (OR PROPERTIES) REFERENCED HEREIN OR AS TO THE ACCURACY OR COMPLETENESS OF THE INFORMATION CONTAINED HEREIN, AND SAME IS SUBMITTED SUBJECT TO ERRORS, OMISSIONS, CHANGE OF PRICE, RENTAL OR OTHER CONDITIONS, WITHDRAWAL WITHOUT NOTICE, AND TO ANY SPECIAL LISTING CONDITIONS IMPOSED BY THE PROPERTY OWNERS. ANY PROJECTIONS, OPINIONS OR ESTIMATES ARE SUBJECT TO UNCERTAINTY AND DO NOT SIGNIFY CURRENT OR FUTURE PROPERTY PERFORMANCE.

**Josie Jerde**

(916) 849-1514

[josie@jerdecre.com](mailto:josie@jerdecre.com)

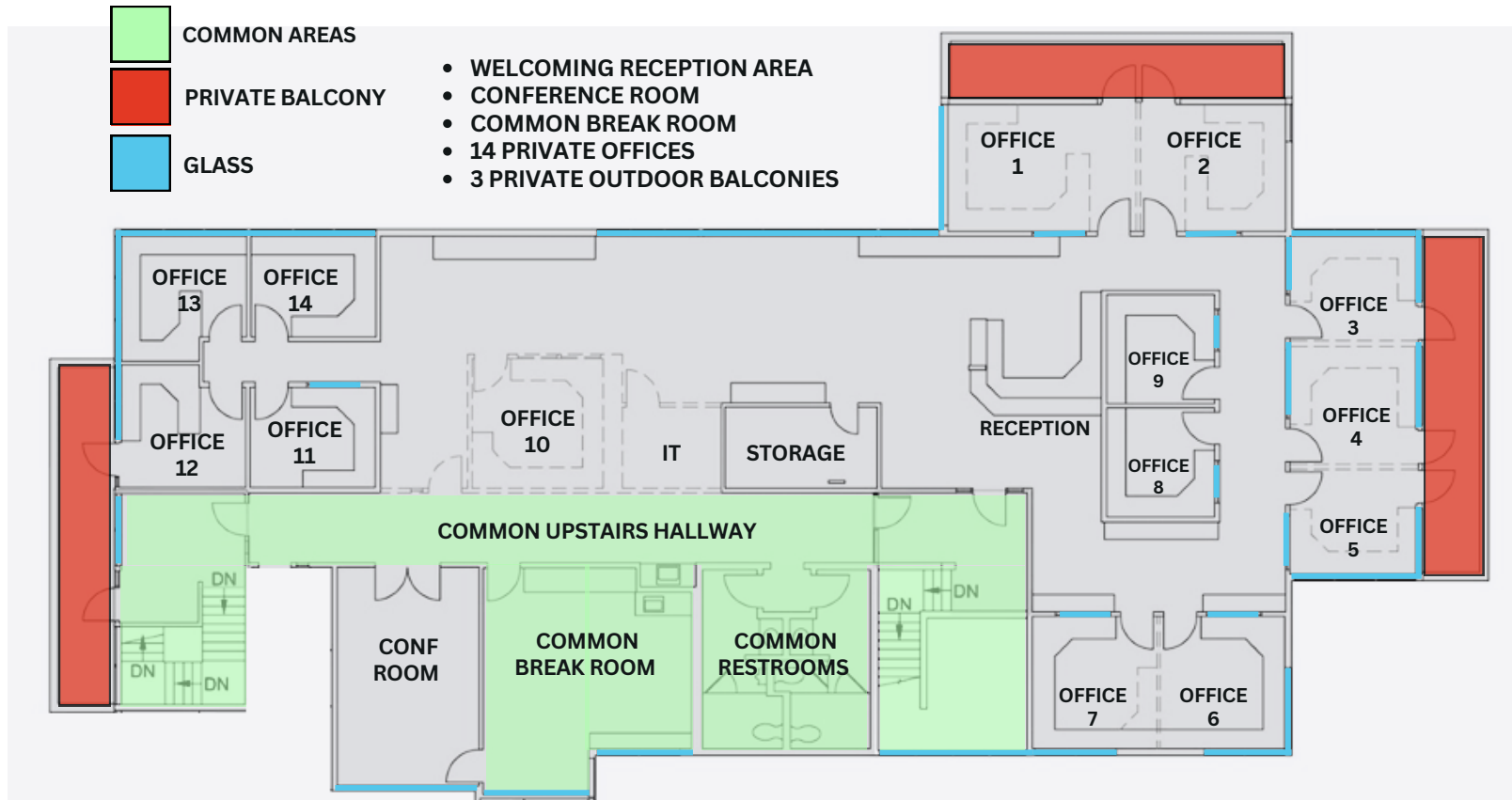




PROFESSIONAL DR.

# FLOOR PLAN Suite 200

+/- 5,149 RSF



 GLASS LINE

**Josie Jerde**

(916) 849-1514

josie@jerdecre.com

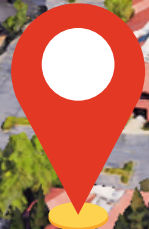
The information contained in this communication is strictly confidential. This information has been obtained from sources believed to be reliable but has not been verified. NO WARRANTY OR REPRESENTATION, EXPRESS OR IMPLIED, IS MADE AS TO THE CONDITION OF THE PROPERTY (OR PROPERTIES) REFERENCED HEREIN OR AS TO THE ACCURACY OR COMPLETENESS OF THE INFORMATION CONTAINED HEREIN, AND SAME IS SUBMITTED SUBJECT TO ERRORS, OMISSIONS, CHANGE OF PRICE, RENTAL OR OTHER CONDITIONS, WITHDRAWAL WITHOUT NOTICE, AND TO ANY SPECIAL LISTING CONDITIONS IMPOSED BY THE PROPERTY OWNERS. ANY PROJECTIONS, OPINIONS OR ESTIMATES ARE SUBJECT TO UNCERTAINTY AND DO NOT SIGNIFY CURRENT OR FUTURE PROPERTY PERFORMANCE.





# JERDE

# LOCATION



**2151**

**DOUGLAS BLVD.**

**EUREKA RD.**

**PROFESSIONAL DR.**